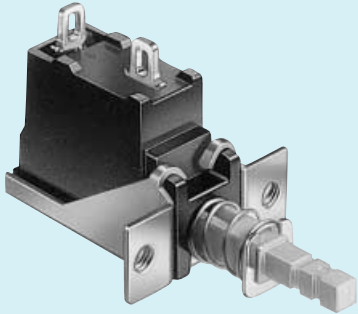


PS3-22SP SERIES PUSH SWITCHES

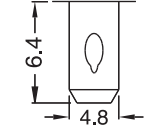

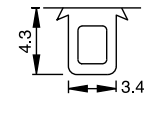
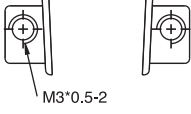
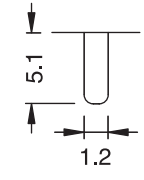
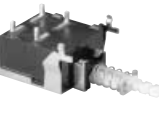
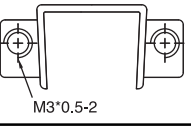
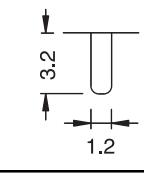
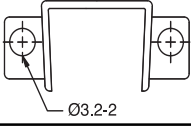
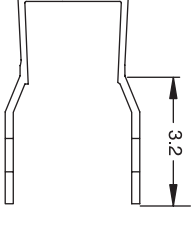
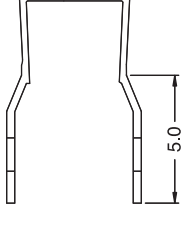
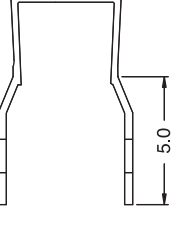


GENERAL SPECIFICATIONS

CONTACT RESISTANCE	: 100mΩ INITIAL (MAX)
INSULATION RESISTANCE	: 500MΩ (MIN) 500VDC
WITHSTAND VOLTAGE	: 2000 VAC-1 MINUTE
LIFE EXPECTANCY	: 25,000 CYCLES FOR TV SWITCHES

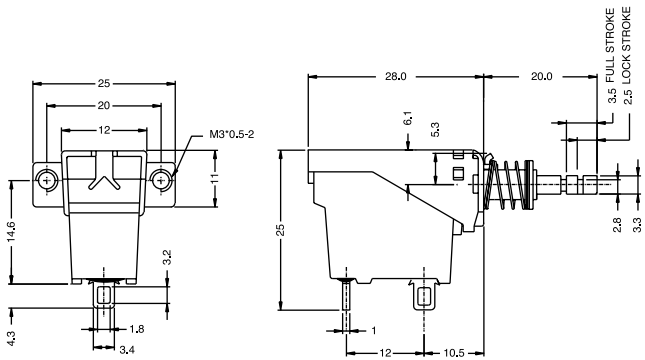


PS3-22SP

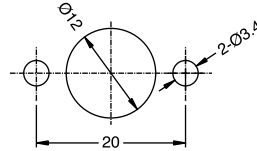
SERIES SYMBOL 機型	TERMINAL TYPE 端子型態		CASE DECISION 外殼型態		ACTUATOR LENGTH COLOR LOCK 柄尺寸及顏色和行程			SPECIAL 上膠											
	CODE	TERMINAL	CODE	CASE		CODE	COLOR	LOCK											
F PIN	F PIN 		2 黃色 Yellow 		18 mm	C	藍色 Blue	2.5mm	A	無點膠 None glue									
						G	黃色 Yellow	2.5mm											
						H	黑色 Black	2.5mm											
						K	橘色 Orange	2.5mm											
W 焊線 Soldering wire	W 焊線 Soldering wire 		3 白色 White 		20 mm	I	咖啡色 Brown	2.5mm	w	點膠 1 Glue 1									
P PCB	P PCB 		4 白色 White 		7 黃色 Yellow 	7 黃色 Yellow			Z	點膠 2 Glue 2									
B	B 		5 白色 White 		6 灰白色 Light White 	8 白色 White 			9 灰白色 Light White 										

PS3-22SP SERIES PUSH SWITCHES

PART NO : PS3-22SP-W7KW

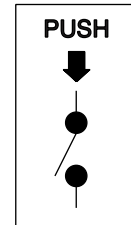


SCREW HOLE

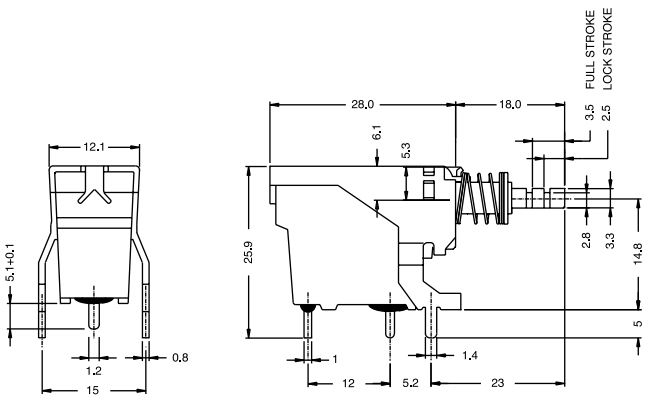


SPECIFICATION

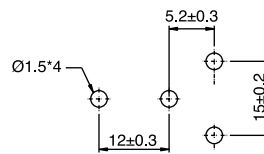
- 1. RATING: 10A 250VAC TV-8
8A/128A 250V~ μ T85
- 2. OPERATION FORCE:
500 \pm 200 GRAM



PART NO : PS3-22SP-P8CZ

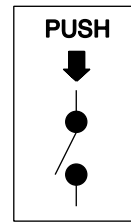


P.C.B. HOLE DETAIL

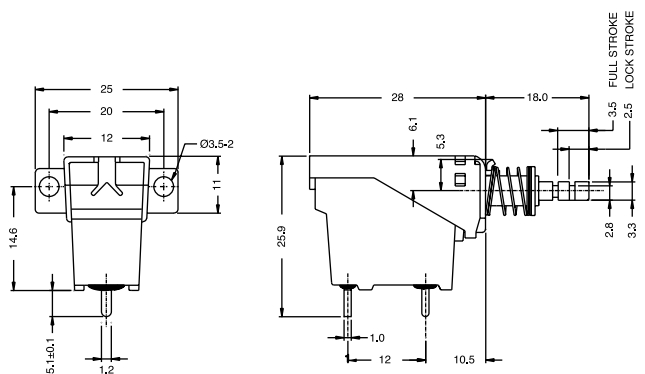


SPECIFICATION

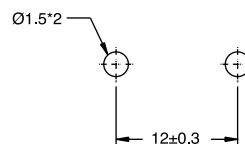
- 1. RATING: 10A 250VAC TV-8
8A/128A 250V~ μ T85
- 2. OPERATION FORCE:
500 \pm 200 GRAM



PART NO : PS3-22SP-P4GZ

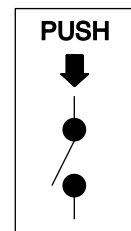


P.C.B. HOLE DETAIL

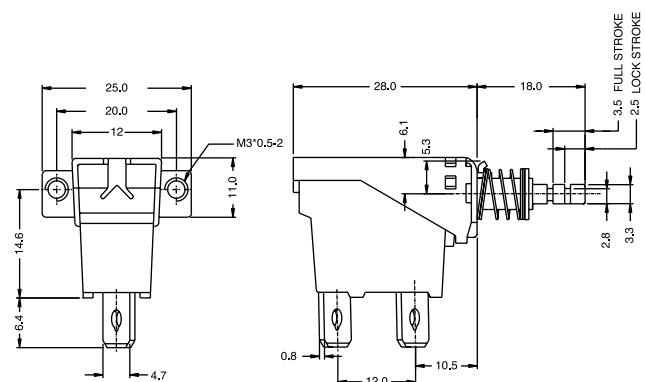


SPECIFICATION

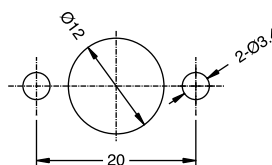
- 1. RATING: 10A 250VAC TV-8
8A/128A 250V~ μ T85
- 2. OPERATION FORCE:
500 \pm 200 GRAM



PART NO : PS3-22SP-F7CA

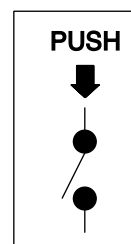


SCREW HOLE

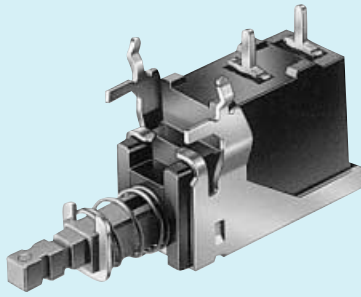


SPECIFICATION

- 1. RATING: 10A 250VAC TV-8
8A/128A 250V~ μ T85
- 2. OPERATION FORCE:
500 \pm 200 GRAM



PS3-22SP SERIES PUSH SWITCHES



GENERAL SPECIFICATIONS

CONTACT RESISTANCE : 100mΩ INITIAL (MAX)
 INSULATION RESISTANCE : 500MΩ (MIN) 500VDC
 WITHSTAND VOLTAGE : 2000 VAC-1 MINUTE
 LIFE EXPECTANCY : 25,000 CYCLES FOR TV SWITCHES



PS3-22SPA



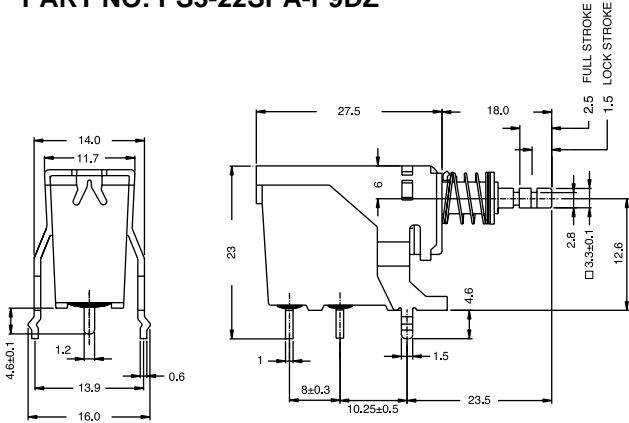
SERIES SYMBOL 機型	TERMINAL TYPE 端子型態		CASE DECISION 外殼型態		ACTUATOR LENGTH COLOR LOCK 柄尺寸及顏色和行程			SPECIAL 上膠	
	CODE	TERMINAL	CODE	CASE	CODE	COLOR	LOCK		
	W 焊線 Soldering wire	4.3	2 黃色 Yellow	Ø3.2-2	16.0mm	F 白色 White	2.5mm	A	無點膠 None glue
	P PCB	4.6	3 白色 White	M3*0.5-2	17.4mm	B 白色 White	2.5mm	w	點膠 1 Glue 1
	L 彎腳 Bending terminal	10.5	4 白色 White	Ø3.5-2	18mm	A 白色 White	2.5mm	Z	點膠 2 Glue 2
			6 白色 White	4.0		E 藍色 Blue	2.5mm		
			7 黃色 Yellow	M3*0.5-2		J 橘黃色 (Orange)	2.5mm		
			5	15.3	17.6mm	D 灰色 Grey	1.5mm		
			9 灰色 Grey	13.9		Q 橘黃色 (Orange)	2.5mm		

◆ 無段落在最後一碼位加註 "N"

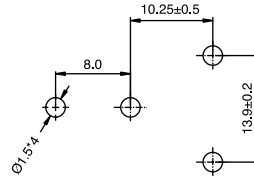
◆ Add "N" at last code signing for none lock.

PS3-22SP SERIES PUSH SWITCHES

PART NO: PS3-22SPA-P9DZ

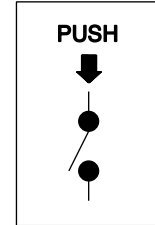


P.C.B. HOLE DETAIL

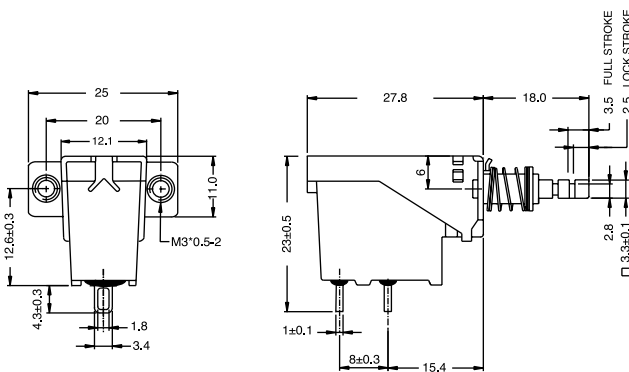


SPECIFICATION

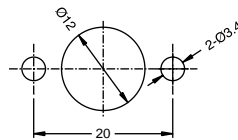
1. RATING: 10A 250VAC TV-8
8A/128A 250V~μT85
2. OPERATION FORCE:
500±200 GRAM



PART NO: PS3-22SPA-W7EZ

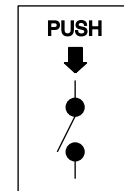


SCREW HOLE

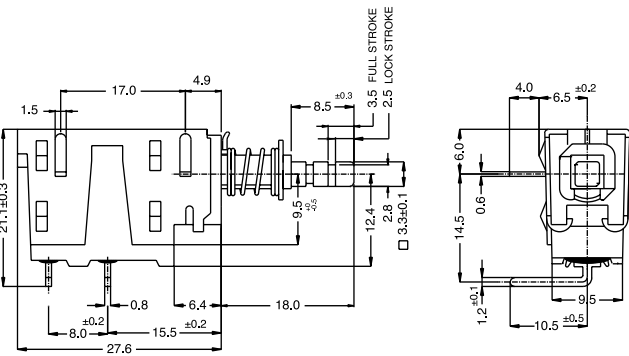


SPECIFICATION

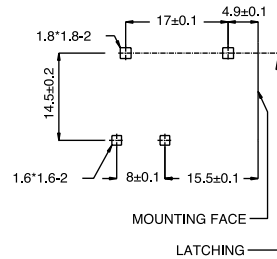
1. RATING: 10A 250VAC TV-8
8A/128A 250V~μT85
2. OPERATION FORCE:
500±200 GRAM



PART NO: PS3-22SPA-L6AZ

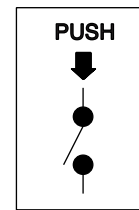


P.C.B. HOLE DETAIL

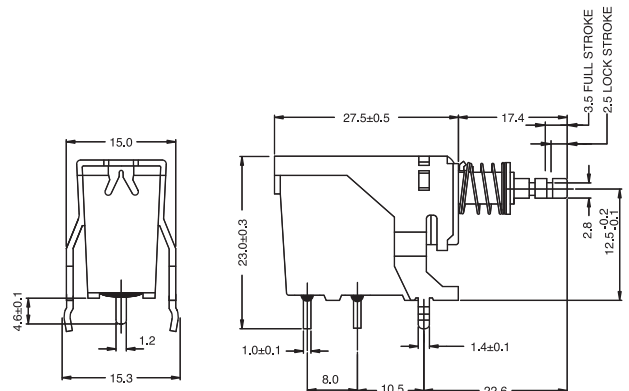


SPECIFICATION

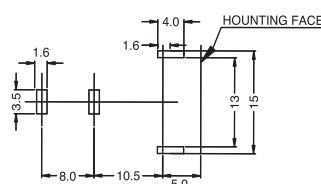
1. RATING: 10A 250VAC TV-8
8A/128A 250V~μT85
2. OPERATION FORCE:
500±200 GRAM



PART NO: PS3-22SPA-P5BZ



P.C.B. HOLE DETAIL



SPECIFICATION

1. RATING: 10A 250VAC TV-8
8A/128A 250V~μT85
2. OPERATION FORCE:
500±200 GRAM

